



equipping churches to transform communities



SPECIAL UPDATE

## THE SITUATION



photo courtesy of diario de hoy



photo courtesy of diario de hoy

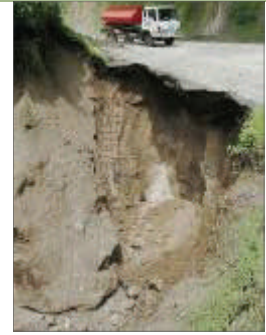


photo courtesy of diario de hoy

ENLACE would first like to thank so many of you for your prayers and concern over the past few weeks. The country has been hit hard with natural disasters. However, it has been amazing to see the way God is working in and through His people in El Salvador.

Weeks of torrential rain brought on by a pacific tropical storm and then Hurricane Stan left thousands homeless throughout Central America. In El Salvador, the saturated earth triggered mud and landslides. In addition, the Santa Ana volcano has been erupting, raining rocks and debris on the surrounding area. On Friday, a 6.2 earthquake hit off the coast of El Salvador giving everyone a scare, but caused no major damages. In total, more than 70 people lost their lives and over 50,000 are still in shelters. Partnering ENLACE communities were spared from life loss. However, many houses have been lost or severely damaged as well as severe damage to roads, water systems and even recently planted crops.

## RELIEF EFFORTS



food distribution



waiting in the mud

The communities of Las Delicias, El Tinteral and San Jose El Naranjo were all heavily affected by the storms. The local partner churches in these communities have identified the areas of most need over the past two weeks and ENLACE has responded through gifts of clothing, food, medicine and construction supplies to over 5,000 people. The churches themselves identified and responded to the needs in their area and served as shelters for families at risk. ENLACE also teamed up with a local church network in providing relief to the areas in most need nationwide.

## LONG-TERM SOLUTIONS



a house in abelines even further damaged by the rains



church leaders near landslide in las delicias

Now that the storms have mostly passed and the sun is shining again, ENLACE is committed to collaborating with partner churches as they develop long-term solutions long after



house in danger in las delicias



el tinteral community members

In the community of Abelines, the health committee is responding to an increase in infant and elderly illnesses and some houses dangerously close to collapsing due to the persistent weather.

In the communities of Las Delicias, El Tinteral and San Jose El Naranjo the churches and communities are hard at work repairing houses, roads, bridges water systems and even damaged agricultural areas. In addition, risk mitigation projects have been identified in El Tinteral and Las Delicias where church and community members will be constructing more retaining walls and terracing in strategic areas to prevent damage during future storms.



mudslide in las delicias



washout under house foundation

## HOW YOU CAN HELP

Over \$25,000 in project funds is needed to respond effectively to the situation in ENLACE partner communities.

You can help.

If you would like to contribute to these efforts please send and make checks payable to:

ENLACE

5405 Alton Pkwy

Suite 5A Number 458

Irvine, CA 92604

Memo: hurricane response

...or contact Larry Kasper:

[ldkenlace@cox.net](mailto:ldkenlace@cox.net)

949 387 8071



equipping churches to transform communities

[www.enlaceonline.org](http://www.enlaceonline.org)